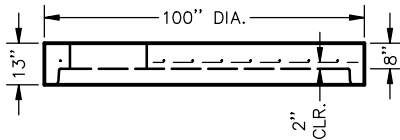
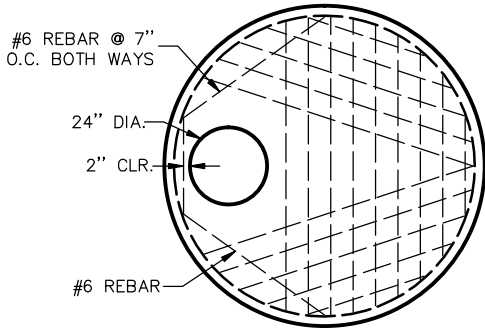


84" DIA. MANHOLE FLAT TOP

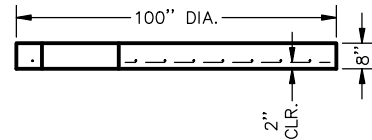
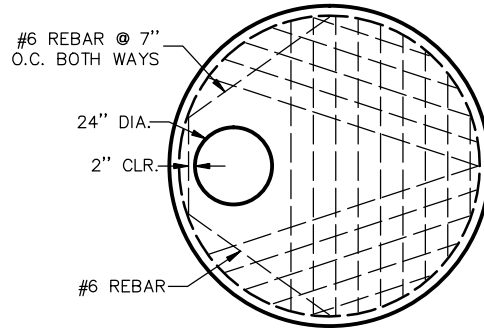


NOTES:

1. CONFORMS TO ASTM C-478
2. MEETS H-20 LOAD RATING

WEIGHT:
6,949 LBS.

84" DIA. MANHOLE FLAT TOPS WITH NO JOINT

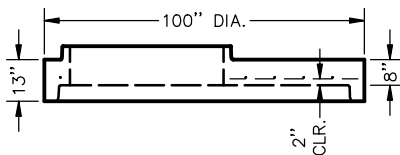
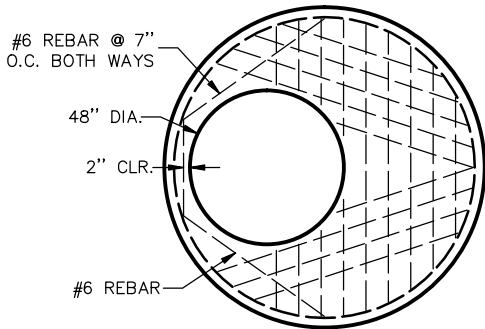


NOTES:

1. CONFORMS TO ASTM C-478
2. MEETS H-20 LOAD RATING

WEIGHT:
6,949 LBS.

84" DIA. MANHOLE REDUCING SLAB

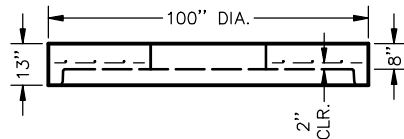
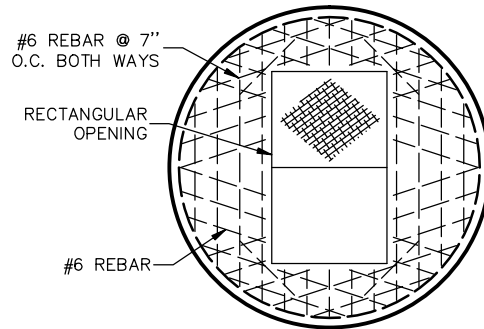


NOTES:

1. CONFORMS TO ASTM C-478
2. MEETS H-20 LOAD RATING

WEIGHT:
5,771 LBS.

84" DIA. MANHOLE FLAT TOP WITH HATCH OR OPENING



NOTES:

1. CONFORMS TO ASTM C-478
2. MEETS H-20 LOAD RATING

WEIGHT:
5,771 LBS.

84" DIA. MANHOLE FLAT TOPS



FILE NO.: 151122E

DATE: 03/31/2015

PG# 27

O: 616.453.9429
 F: 616.453.7580
 2500 3 MILE ROAD NW
 GRAND RAPIDS, MI 49534-1314
www.grandvalleyconcrete.com