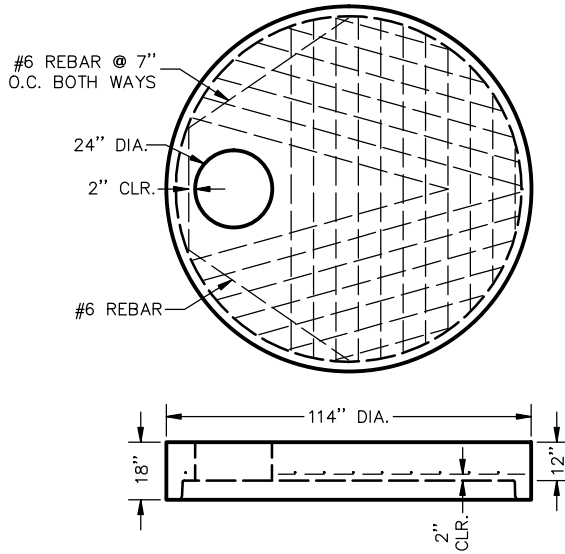


96" DIA. MANHOLE FLAT TOP

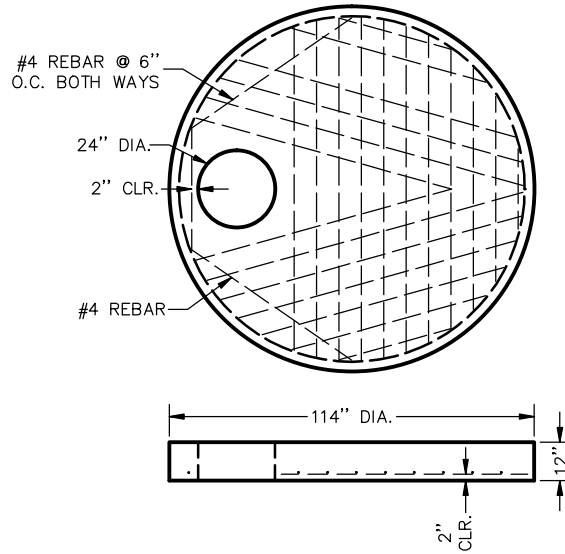


NOTES:

1. CONFORMS TO ASTM C-478
2. MEETS H-20 LOAD RATING

WEIGHT:
6,949 LBS.

96" DIA. MANHOLE FLAT TOPS WITH NO JOINT

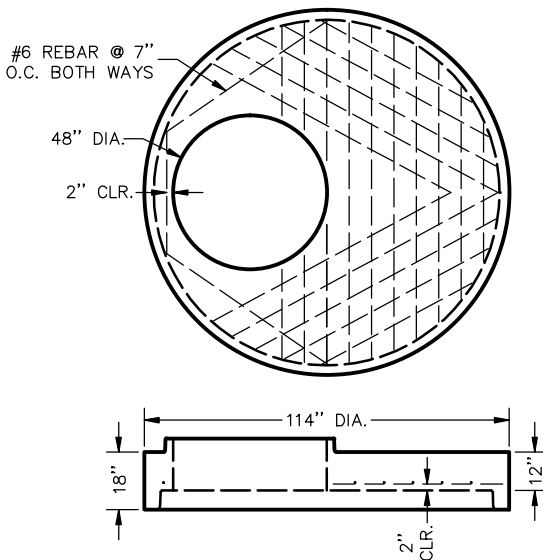


NOTES:

1. CONFORMS TO ASTM C-478
2. MEETS H-20 LOAD RATING

WEIGHT:
7,961 LBS.

96" DIA. MANHOLE REDUCING SLAB

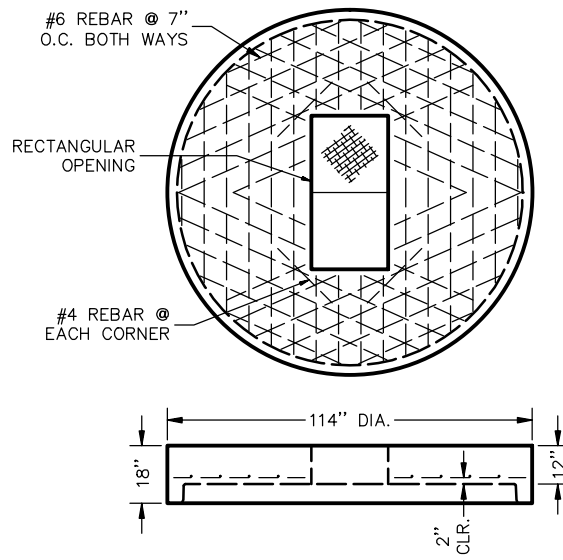


NOTES:

1. CONFORMS TO ASTM C-478
2. MEETS H-20 LOAD RATING

WEIGHT:
9,139 LBS.

96" DIA. MANHOLE FLAT TOP WITH HATCH OR OPENING



NOTES:

1. CONFORMS TO ASTM C-478
2. MEETS H-20 LOAD RATING

WEIGHT:
9,139 LBS.

96" DIA. MANHOLE FLAT TOPS



FILE NO.: 151122E

DATE: 03/31/2015 PG# 30

O: 616.453.9429
F: 616.453.7580
2500 3 MILE ROAD NW
GRAND RAPIDS, MI 49534-1314
www.grandvalleyconcrete.com