

AVAILABLE OPTIONS FOR TANKS:

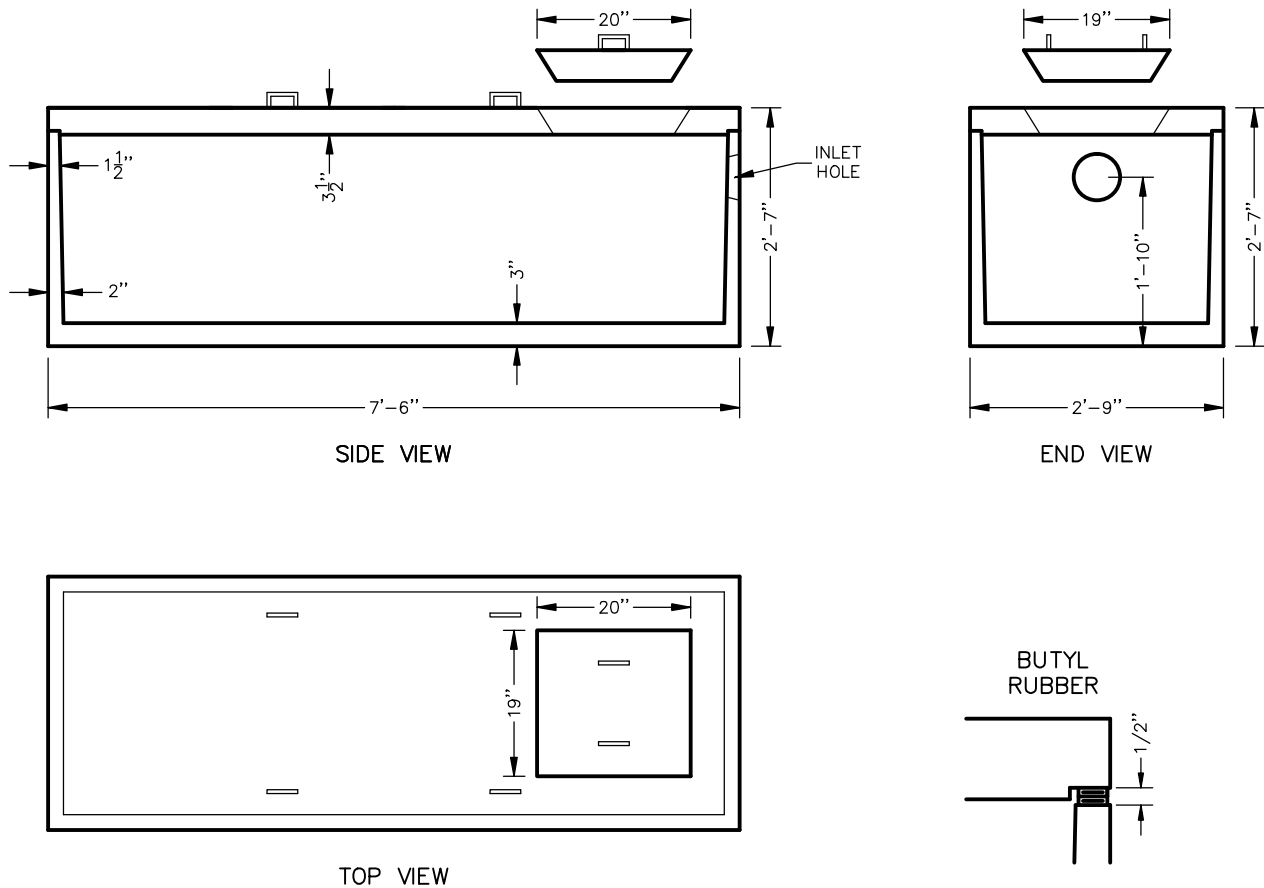
1. PLASTIC PIPE SEALS OR BOOTS PROVIDED AT PIPE OPENINGS.
2. EFFLUENT FILTERS CAN BE PROVIDED AS REQUIRED, BUT INSTALLED BY OTHERS.
3. CAST IN PVC RISERS WITH COVERS WITH SAFETY GRATES IF REQUIRED.
4. 24" DIA., 36" DIA. & 48" DIA. PRECAST CONCRETE RISERS AND ADJUSTING RINGS.
5. SQUARE AND RECTANGULAR PRECAST CONCRETE RISERS.
6. CAST IRON FRAMES & COVERS
7. ALUMINUM HATCHES
8. CUSTOM PIPE OPENING AND ACCESS OPENING SIZES & LOCATIONS.
9. CUSTOM INTERIOR PRECAST WALLS.
10. POLYPROPYLENE COATED STEEL STEPS.
11. COAL TAR EPOXY INTERIOR COATED.
12. BITUMINOUS TAR EXTERIOR COATED.


SEPTIC TANK NOTES:

1. ALL TANK DIMENSIONS ARE IN INCHES.
2. ACCESS OPENINGS PROVIDED PER PLAN. DETAIL SHOWS STANDARD OPENINGS.
3. TANK JOINT SEALED WITH BUTYL SEAL ASTM C-990-91.
4. TANKS ARE ASTM C-1227.
5. GRADE 65 WIRE.
6. GRADE 60 REBAR.
7. OUTLET SIPHON PROVIDED, BUT INSTALLED BY CONTRACTOR. SIPHONES FOR GREASE AND OIL SEPERATORS ARE PROVIDED BY OTHERS

WEIGHT:

TOP - 902 LBS.
 BOTTOM - 2,266
 TOTAL - 3,168 LBS.



300 GALLON PUMPING VAULT	
 <p>GRAND VALLEY CONCRETE PRODUCTS</p>	FILE NO.: 151122E
	DATE: 05/02/2015 PG# 35
O: 616.453.9429 F: 616.453.7580 2500 3 MILE ROAD NW GRAND RAPIDS, MI 49534-1314 www.grandvalleyconcrete.com	